

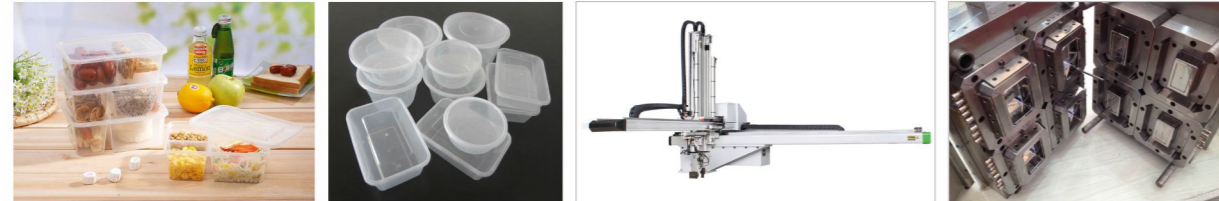
更多高速薄壁应用方案可选

- 伺服及变量泵系统
- 闭环泵
- 同步熔胶
- 开模伺服定位
- 伺服蓄能注射
- 同步顶出
- PC专用螺杆

More applications for high speed thin-wall products injection molding machine can be chosen

- Servo motor or variable-pump
- Closed-loop pump
- Synchronous charging & mold opening
- Servo valve positioning for mold opening
- Servo valve & accumulator injection
- Synchronous ejection & mold opening
- Special screw for PC

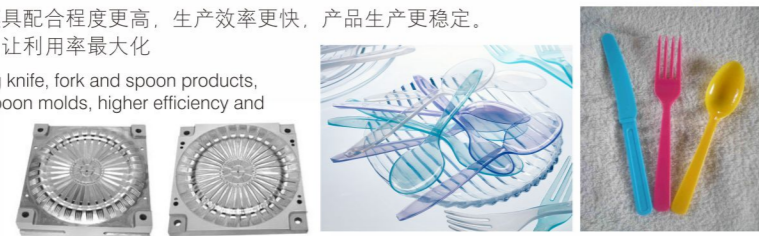
KF薄壁系列：一次性快餐盒生产系统 KF Series: Disposable fast food box production system



- 提供全套生产周期更短、稳定性更高、经济性更好快餐盒生产系统方案。
- 从厂房规划到模具选择，从产品规划到机型选型，可提供一出二到一出四，乃至一出八的全套机器、模具设备！
- To provide a full set of production system for fast food box, with shorter production cycle, higher stability, and more economy.
- To provide options from the workshop planning to mold selection, and from product planning to machine selection. To offer complete set of machine and molds with 2,4, or even 8 cavities.

KF刀叉系列：刀叉勺专业生产系统 KF Knife & Fork Series: The Professional Production System

- 专为刀叉勺产品专门研发的专用机，与刀叉模具配合程度更高，生产效率更快，产品生产更稳定。
- 专业成型，为客户制定专属于产品的专用机，让利用率最大化
- This is a new series specially designed for producing knife, fork and spoon products, achieving much better coordination with fork/knife/spoon molds, higher efficiency and more stable in production.
- With professional molding system, the customized machine is designed just for exclusive products which will maximize the utilization of the machine.



PKF系列：模内贴标生产系统 PKF Series: In Mold Labeling production system

- 配合高性能的全自动IML 模内贴标机械臂系统；
- 高强度、高韧性的IML模具；
- 成熟稳定机器，令本系统具有重复精度高、贴标成品高。
- With high-performance automatic IML system;
- the mold with high strength and high toughness;
- together with mature and stable machine; the system has high repeat accuracy, and high efficiency for product labeling.



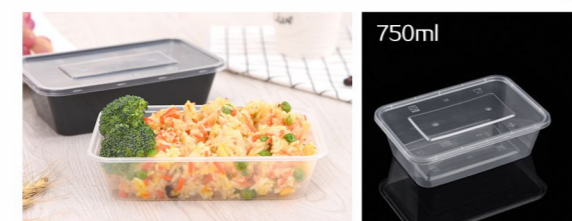
PC材料专用方案 Special applications for PC

生产各种高精密的电器、电子PC零部件，成形更好、偏差更小！
To product sorts of high precision electrical equipments and electronic parts in PC, with a better forming and less deviation.



生产实例 Production Instance

- 注塑机型号:KF460-S8 Machine model: KF460-S8
- 产品名称:750ml方形快餐盒 Product: 750ml round bowl
- 模腔数:8 Cavity: 8
- 产品壁厚:0.37mm Thickness: 0.37mm
- 产品重量:12.9g Weight: 12.9g
- 材料:PP Material: PP
- 生产周期:6s(含机械手) Production cycle time: 6s (include robot)



欢迎关注宝捷订阅号微信
及时了解最新资讯

宝捷集团2019年10月印

宝捷精机
PowerJet

KF系列
高速薄壁专用注塑机
(1,600 ~ 4,600kN)



KF Series

High Speed Injection Molding Machine

for Thin-wall Products



佛山市宝捷精密机械有限公司
POWERJET PLASTIC MACHINERY CO., LTD.

厂址: 中国·广东省佛山市三水区乐平镇创新大道西5号 邮编: 528137
ADD: No.5, ChuangXin Road West, LePing, SanShui, FoShan City, GuangDong, P.R.China
Service line:86-400 830 0005 | TEL:86-757-86697806 | FAX:86-757-86697861 | E-mail:powerjet@126.com

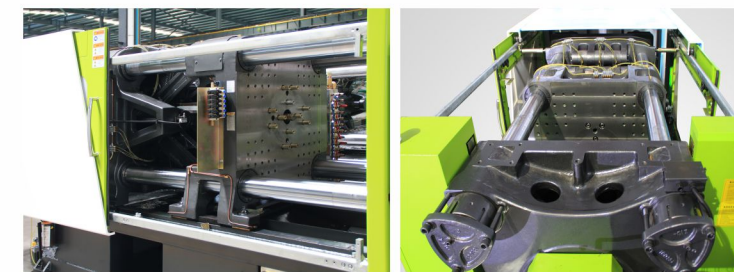


www.powerjet.cn

KF Series 高速薄壁专用注塑机

High Speed Injection Molding Machine for Thin-wall Products

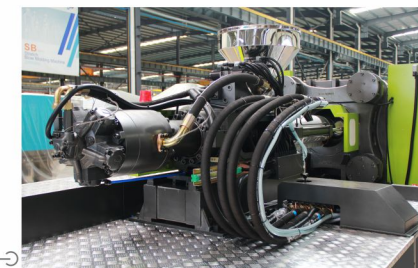
- 低温：产品不发脆，省电。
- 低压：产品不易变形，节约原料，同时保护模具和机械。
- 高响应快速：0.3秒内达到理想的注射速度。
- Low Temperature: Product not crisp, and energy-saving.
- Low Pressure: Product not easy to deformation, saving raw materials, and protecting the mold and machine.
- Fast Response Speed: In 0.3s to achieve the best injection speed.



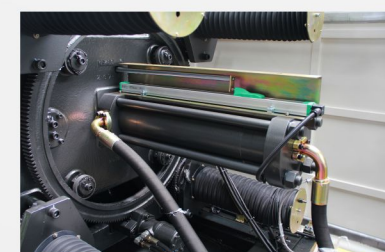
全新三大板锁模设计，优化应力分布，刚性更高、性能更稳定，满足机械快速运动需求。
Brandnew 3-platen clamping design, which will optimize the stress distribution and has higher rigidity and more stable performance, meeting the demand of rapid mechanical movement.



射移双拉杆结构，定位更牢固、对中更准确。
Injection movement structure of duplex pull rods can consolidate location and have more precise centering.



特别油路设计，大幅提高注射加速度及机械运动速度，全方位油路连接工艺，耐用性提高。
Special oil-circuit design greatly improves the injected acceleration & movement, full range of oil connection technology, durability is improved.



射胶和锁模的电子尺采用非接触式，适应高速运行的刚性要求，精度更高、更耐用。
The linear displacement transducer for injection and clamping is non-contact mode, suited to the rigidity requirements of high-speed operation, higher precision and higher durability.



标配多组吹气，专为快速生产量身定制。
The standard configuration of multi-sets of air blowing is designed specially for fast cycle production



标配纳米红外线发热圈
Standard Nano infrared heaters



低阻力线性导轨，定位准确，响应快速，射胶重复精度高。
Low resistance linear guide rail, positioning precision, fast response, high repeatability.



全新刚性机架、减震更明显，生产更稳定。同时降低机架高度，适应矮平厂房的客户需要，让产品随手可“及”。
New rigid frame and better shock-absorbing guarantee more stable production. Reducing the height of framework to fit for low workshop, and products can be taken easily.

- 创新设计塑化系统实现低温塑化：节能、环保、产品韧性高不发脆。
- 领先液压系统实现低压注射：机械保护好、模具寿命长、产品应力小、变形小。
- 优化控制系统实现高响应快速：在更短时间内达到较高射速，0.3秒内达到理想的射速！

- Innovative design of plasticizing system achieves low-temperature injection; it makes the machine energy-saving, environmental, and manufactures products with high tenacity and toughness.
- Advanced hydraulic system achieves low pressure injection; it makes the machine gain better mechanical protection, have longer mold service life, and manufactures products with low stress and deformation.
- Optimized control system achieves fast response speed; it makes the machine obtain higher shot rate in a short time and reaches the best within 0.3 seconds.

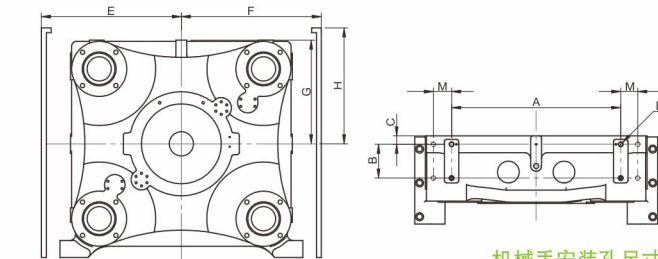
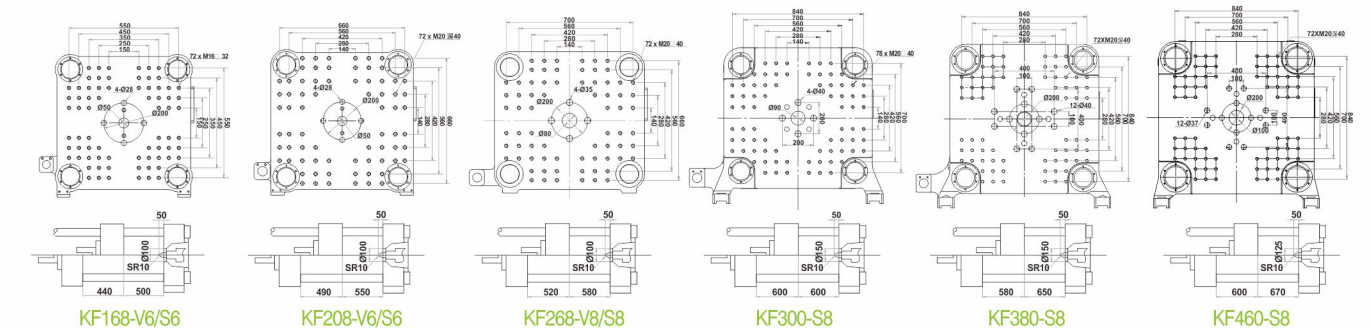
独特单缸注射，射速更快、更稳定，满足多腔薄壁产品的需要。
Unique single cylinder injection, faster and more stable injection rate, can meet the needs of the multi-cavity thin wall products.

参数表 Parameter

说明	DESCRIPTION	单位	KF168-V6/S6	KF208-V6/S6	KF268-V8/S8	KF300-S8	KF380-S8	KF460-S8
国际公认型号	International size rating		1600-380	2080-380	2680-560	3000-800	3800-800	4600-1000
锁模单元 CLAMPING UNIT								
锁模力	Clamping force	kN	1600	2080	2580	3000	3800	4600
开模行程	Opening stroke	mm	440	490	520	550	580	600
模板最大开距	Max.daylight	mm	940	1040	1100	1150	1230	1270
模板外形尺寸	Platen size	mm	705×705	775×755	910×850	950×900	1000×1000	1070×1050
导柱内距	Space between bars	mm	460×460	505×505	580×520	620×570	670×670	690×670
最大模厚	Max.mold height	mm	500	550	580	600	650	670
最小模厚	Min.mold height	mm	160	230	230	250	240	250
顶针行程	Ejector stroke	mm	140	145	145	145	180	150
顶出力	Ejector force	kN	49	65	77	77	77	77
注射单元 INJECTION UNIT								
螺杆直径	Screw diameter	mm	42	42	46	52	52 (60选配)	55
螺杆长径比	Screw L/D ratio	L/D	22	22	22	22	22	24
注射压力	Injection pressure	MPa	190	190	189	188	188	175
理论注射容积	Shot volume	cm ³	201	201	299	425	425	594
实际注射量(PS)	Shot weight(PS)	g	179	179	267	379	379	552
		oz	6.3	6.3	9.4	13.4	13.4	19.5
注射速率(PS)	Injection rate	g/s	225	225	327	503	786	1091
螺杆行程	Screw stroke	mm	145	145	180	200	200	250
螺杆转速	Screw speed	rpm	300	300	300	300	300	300
动力/电热 POWER UNIT								
液压系统压力	Hydraulic system pressure	MPa	17.5	17.5	17.5	17.5	17.5	17.5
油泵电机功率	Pump motor power	kW	22 / 40	22 / 40	37 / 50	40+40	40+40	40+40+34
加热功率	Heater power	kW	14.2	14.2	16.4	21	28.5	30.4
其他 GENERAL								
油箱容量	Oil tank capacity	L	340	420	420	680	810	1300
理论机重	Machine weight	t	4.6	7	7.5	10.5	13	16.5
外形尺寸(L×W×H)	Machine dimensions	m	4.8×1.35×1.8	5.5×1.4×1.75	5.6×1.4×2.1	6.7×1.9×2.2	7.1×1.9×2.2	8.15×2.1×2

备注：本公司根据产品提升的需要，可对技术参数、部份元件配置及服务内容进行更改，恕不另行通知。
Remarks: According to upgrading of machine, we will change technical parameters, configuration of some parts and service's items without further notice.

模板尺寸 Platen dimensions



机型	A	B	C	D	E	F	G	H	M
KF168-V6/S6	350	70	35	4-M16深32	600	600	353	440	/
KF208-V6/S6	350	70	35	4-M16深32	640	640	387.5	470	/
KF268-V8/S8	700	140	35	4-M20深40	690	690	429	510	/
KF300-S8	560	140	35	8-M20深40	840	840	455	460	140
KF380-S8	560	140	35	8-M20深40	870	870	505	630	140
KF460-S8	560	140	35	4-M20深40	810	938	530	650	/

机械手安装孔尺寸 Mechanical installation hole size